

## Orient the SMART Board™ Interactive Whiteboard

Orientation ensures your touch is registered accurately when you are using the interactive whiteboard. For example, if you are pressing the interactive whiteboard with your finger and your cursor appears somewhere other than where you are pressing, try orienting the interactive whiteboard.

### Quick Orientation

- 1 Press and hold the circled pen tray buttons simultaneously until the Orientation screen appears.



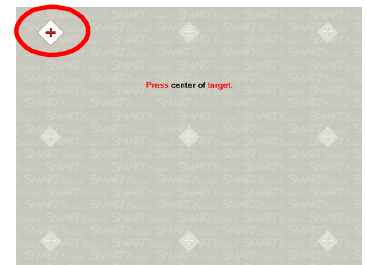
Pen Tray Buttons



Pen Tray Buttons

- 2 Begin orientation at the upper-left corner. Press your finger squarely in the center of each red cross in the order indicated by the white, diamond-shaped background.

**NOTE:** While orienting, if you are not satisfied with the precision of a particular orientation point, simply press one of the pen tray buttons circled above or the left arrow key on your keyboard to redo the previous orientation point.



Orientation Screen

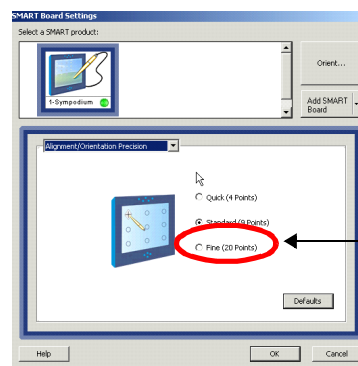
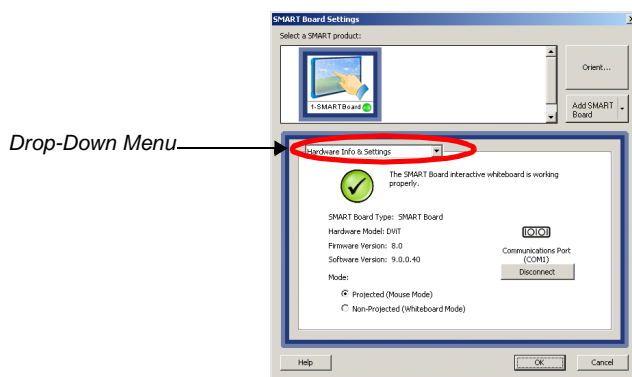
### Changing Orientation Settings

Increase the detail of calibration for applications that require a greater amount of precision.

- 1 Press the **SMART Board** icon in the Microsoft® Windows® Notification Area and select **Control Panel**.
- 2 Press the **SMART Board Settings** button.
- 3 A new window appears. Select **Orientation/Alignment Settings** from the drop-down menu.
- 4 Select **Fine (20 Points)** and press **OK**.



Notification Area



- 5 From the control panel, press the **Orient/Align the SMART Board** button to begin the orientation process.