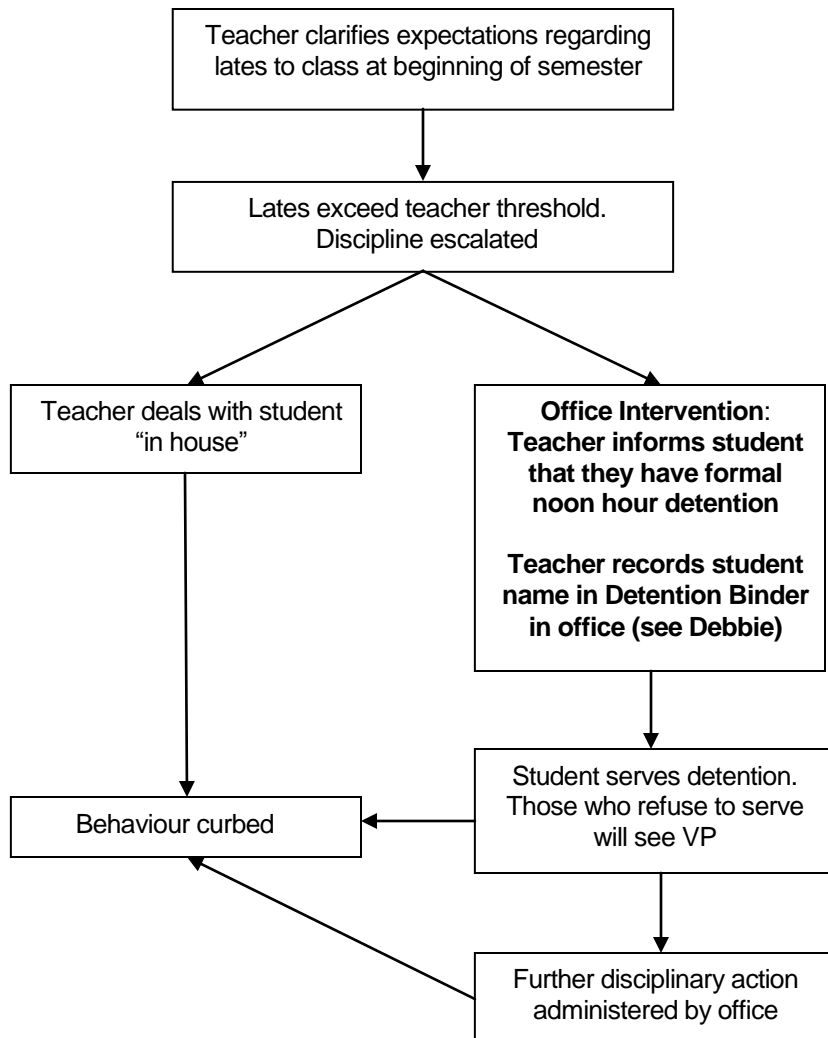


## Process for Dealing With Late Students



### Notes:

- Teacher thresholds are exceeded when the frequency of student tardiness becomes an issue for the classroom teacher, or is having a detrimental effect on student learning.
- **Please enter the names of students who are being issued detentions before the end of business on the day that the late has occurred. Detentions will be scheduled for the following day.**
- If teachers currently use a different process to deal with late students that is successful, please continue to use it.
- There is no set number of lates that need to be exceeded before referral to detention is made.
- Students who continue to be habitually late despite intervention will be dealt with by the office on a person to person basis.
- As professionals, you are empowered to set the limits in your class and enforce them as you see fit with the support of the office. Your class, your rules.
- Please remember to be **proactive** in dealing with students who have a history of tardiness.